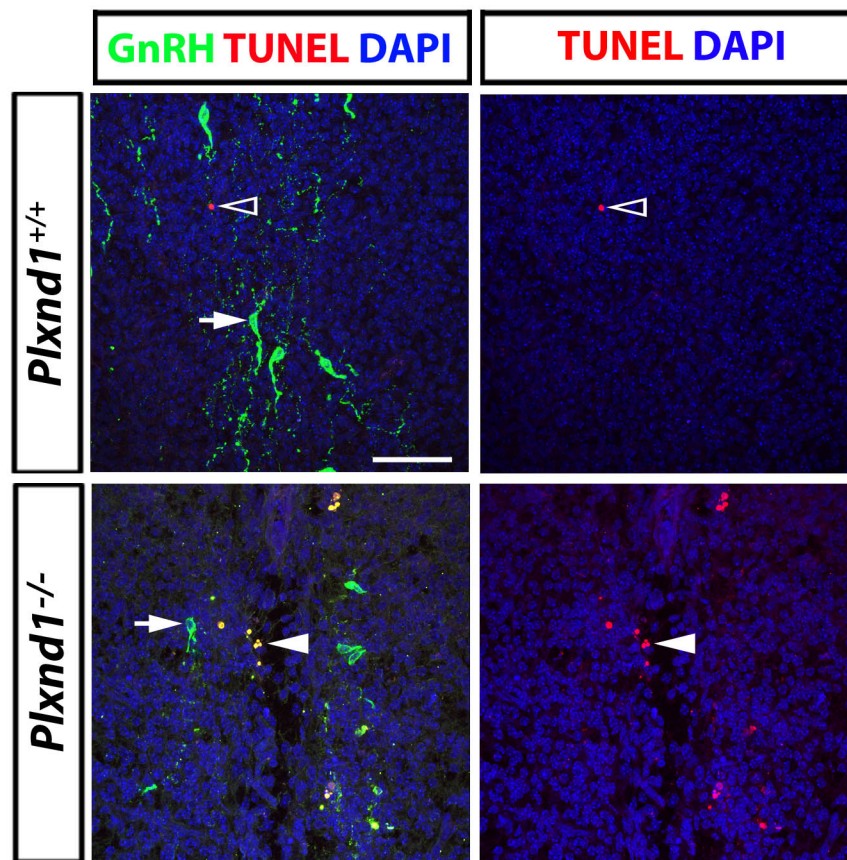


# SUPPLEMENTAL DATA



**Figure S1.** *GnRH neuron loss after forebrain entry correlates with increased apoptosis in the MPOA in *Plxnd1*-null mutants.* Coronal sections of E14.5 mouse MPOA of the indicated genotypes were stained with TUNEL to reveal apoptotic cells (red) before immunolabelling for GnRH (green). The empty arrowhead indicates an example of a GnRH-negative/TUNEL-positive cell; the solid white arrowhead indicate an example of a GnRH-positive/TUNEL-positive cells; the white arrow indicates an example of a GnRH-positive/TUNEL-negative cell.

Scale bar: (A) 50  $\mu$ m.